

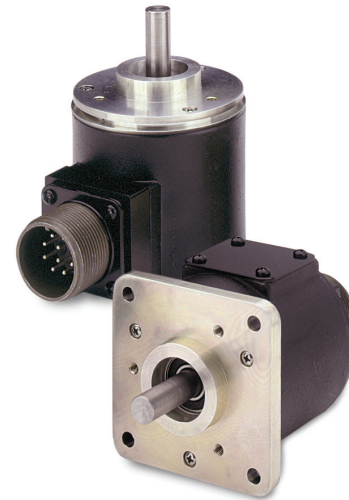
SERIES R25

Harowe™ brand

Heavy Duty Resolver

Key Features

- Rugged Housing with IP65 Rating
- Spaced Bearings for up to 10x the Life of Traditional Duplex Bearings
- Withstands 200G Shock and 40G Vibration
- High Temperature Rating of 125°C Continuous Duty
- Available in Square and Servo Mount



Most Models

SPECIFICATIONS

STANDARD OPERATING CHARACTERISTICS

Electrical Kit	Speed (Number of Poles)	Transformer Ratio (V in/V out)	Input Voltage (Vrms)	Max. Current Input (mA)	Reference Frequency (Hz)	Phase Shift (nominal)	Primary Winding
1A	1 (2)	0.500	5.3	3	4000	-3	Stator
1B	1 (2)	0.500	4.0	25	5000	-6	Rotor
1C	1 (2)	0.470	4.25	55	7000	+4	Rotor
1D	1 (2)	0.500	7.0	25	2500	+6	Rotor
1E	1 (2)	0.950	7.0	12	5000	-8	Rotor
1F	1 (2)	1.000	2.0	10	5000	-8	Rotor
1H	1 (2)	1.069	8	17	2600	8	Rotor
1J	1 (2)	0.454	26	22	2400	6	Rotor
1K	1 (2)	0.50	10	50	4500	-4	Rotor
1M *	1 (2)	0.5	4	25	5000	-6	Rotor
2A	2 (4)	0.250	8.0	20	4000	+5.5	Rotor
3A	3 (6)	0.470	4.25	55	7000	+5.5	Rotor
3B	3 (6)	0.95	7	12	5000	4	Rotor

* Radiation Hardened

MECHANICAL

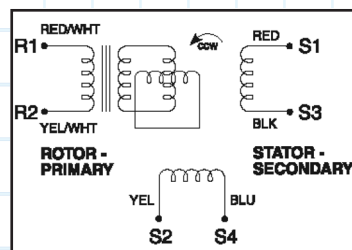
Shaft Size: 3/8"
Mounting Type: Square or Servo Flange
Max Radial Shaft Load: 60 lbs.
Max Axial Shaft Load: 40 lbs.
Max Continuous Speed: 6,000 RPM
Moment of Inertia: .004 oz-in-sec²
Bearing Life: 2x10⁸ Revs at rated shaft load
Housing and Cover: Aluminum
Shaft Material: 416 SS
Weight: 1.6 lbs.

ENVIRONMENTAL

Operating Temperature: -55 to +125°C
Storage Temperature: -55 to +125°C
Shock: 200G at 11 milliseconds time duration.
 Half sine waveform per Mil-S-81963
Vibration: 40G at .06 inch double amplitude at 10-2000 Hz per Mil-S-81963
Humidity: to 98% without condensation
Enclosure: IP65

ELECTRICAL CONNECTIONS

Connector:	7 pin MS	10 pin MS	6 pin MS Clicklock	19 pin MS Clicklock	
Signal	Pin	Pin	Pin	Pin	Cable Color
R1 (Rotor Hi)	A	A	E	A & B	Red w/ White
R2 (Rotor Lo)	B	H	F	C & D	Yellow w/White
S1 (Cos Hi)	C	B	C	E & F	Red
S3 (Cos Lo)	D	I	D	G & H	Black
S4 (Sin Lo)	F	C	B	L & M	Blue
S2 (Sin Hi)	E	J	A	J & K	Yellow w/Blue
N/C	G	G	-	-	-



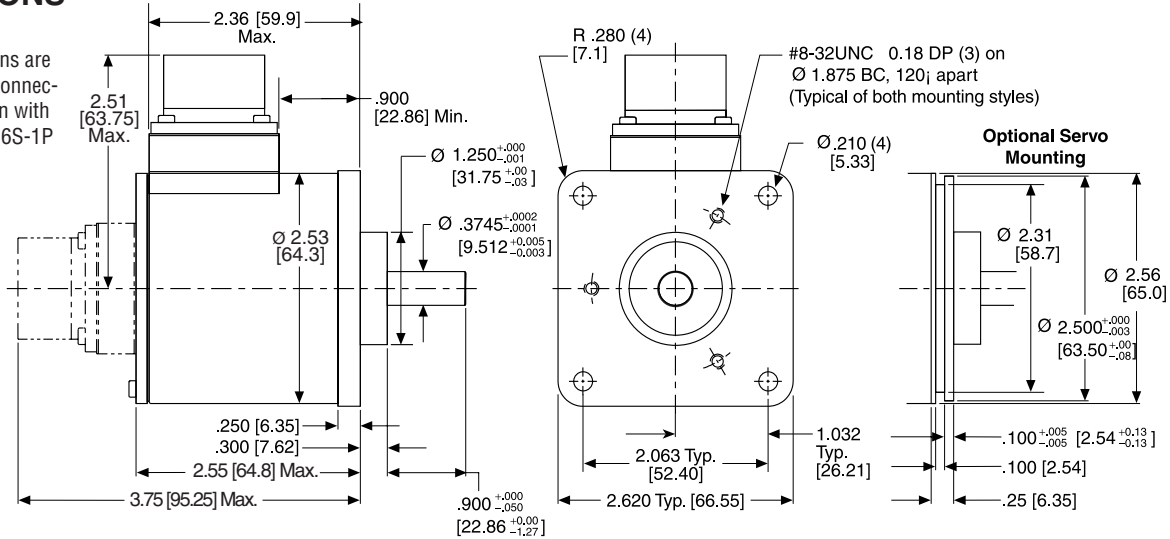
Ordering Information

To order, complete the model number with code numbers from the table below:

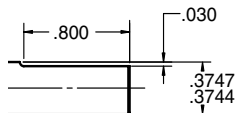
Code 1: Model	Code 2: Mounting	Code 3: Connector Type	Code 4: Conn. Exit	Code 5: Shaft	Code 6: Seal	Code 7: Elec. Parts Kit	Code 8: Accuracy	Code 9: Special
R25	□	□	□	□	□	□□	□□	□□
Ordering Information								
R25 Heavy-duty, resolver	F Flange S Servo	B MS3102E-16S-1P	R Rear Exit	R Round	Y Shaft Seal	Available when Code 8 is 07 to 20	02 2 arc min	00 Factory Assigned Designator
		C MS3102E-18-1P	S Side Exit	F Round with flat	N No Shaft Seal	1A 1E 1J 1B 1F 1K 1C 1H 1M 1D	03 3 arc min 05 5 arc min 07 7 arc min 10 10 arc min	
		E TVP02RW-15-35D F FLYING LEADS G MS3112E-10-6P N RC-12P2N8A2200 P PT02E-14-19-P	W Round with 2 flats @ 90 degrees	Available when Code 8 is 04 to 10 2A	2S 20 arc min Spread 15 15 arc min 20 20 arc min			
						Available when Code 8 is 02 to 10 3A 3B		

DIMENSIONS inches [mm]

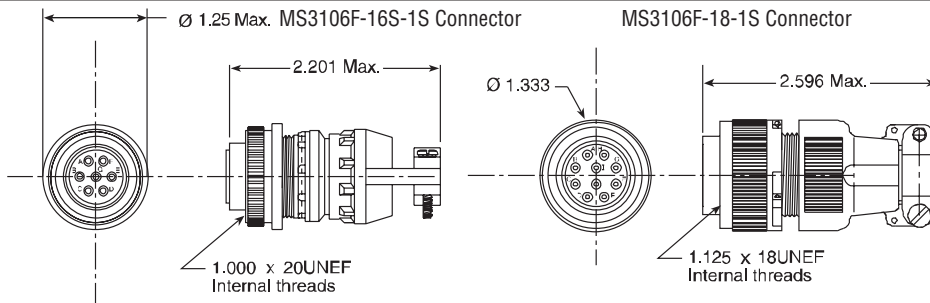
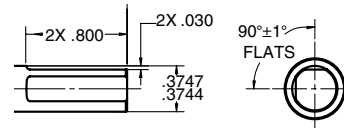
Note: Dimensions are dependent on Connector type - Shown with B = MS3102E-16S-1P



SHAFT WITH FLAT



SHAFT WITH 2 FLATS



Accessories:

CA-18-R-0010: 10 ft.cable with MS3106F-18-1S Connector
CA-16-R-0010: 10 ft.cable with MS3106F-16S-1S Connector
Note: Part numbers listed with -0010 are for 10 Foot Cable; use -0050 for 50 Foot Cable, etc



Headquarters: 1675 Delany Road • Gurnee, IL 60031-1282 • USA

Customer Service:

Tel.: +1.800.873.8731
 Fax: +1.847.662.4150
 custserv@dynapar.com

Technical Support

Tel.: +1.800.234.8731
 Fax: +1.847.662.4150
 northstar.techsupport@dynapar.com

European Sales Representative

Hengstler GmbH
 Uhlhandstrasse 49, 78554 Aldingen
 Germany
 www.hengstler.com